

# Spring Faculty Meeting

*Bloomington / IUPUI*

---

*April 3, 2009*



**INDIANA UNIVERSITY**

---

SCHOOL OF EDUCATION

## **MISSION STATEMENT:**

- The mission of the Indiana University School of Education is to improve teaching, learning and human development in a global, diverse, rapidly changing and increasingly technological society.

# UNIVERSITY PRIORITIES

- Recruiting excellent faculty
- Facilitating inter-campus collaboration
- Increasing graduation rates and certification programs
- Developing a new master plan
- Expanding academic initiatives focused on life sciences, arts & humanities, and internationalization
- Increasing statewide partnerships

# CURRENT CHALLENGES

- Deepening economic crisis
- Changing institutional practices
- Changing state demographics
- Increasingly hostile policy environment
- Increasing competition

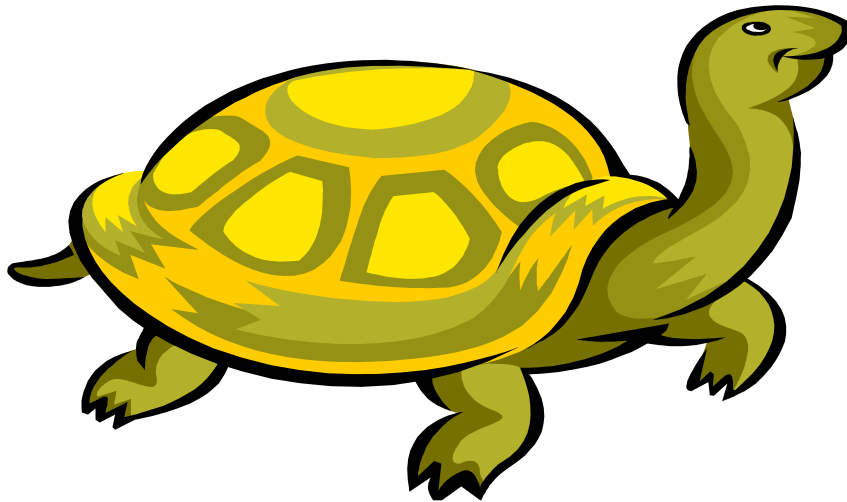
# NEW OPPORTUNITIES

- Increasing DE capacity
- Evolving new degree and certificate programs
- Expanding international partnerships
- Growing faculty competitiveness in funded research
- Improving diversity

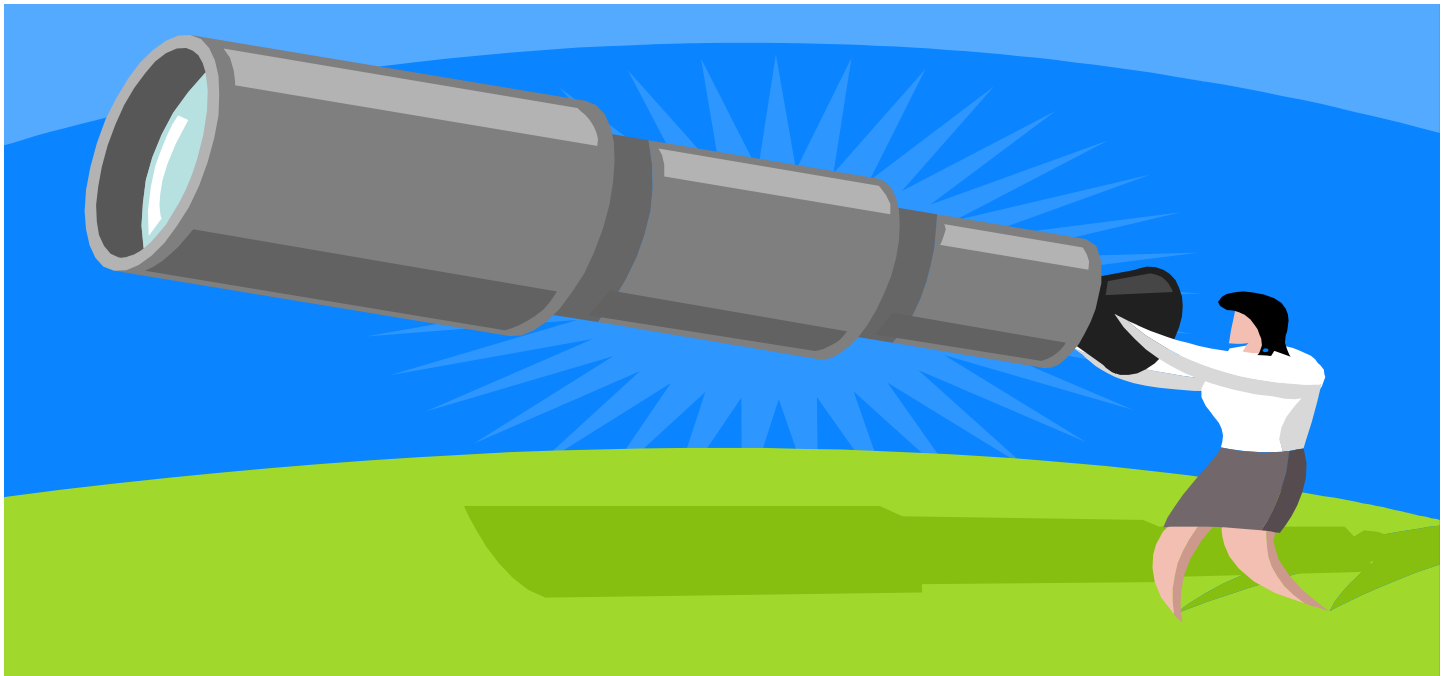
# SOMETHING TO REMEMBER

“Behold the turtle. He only makes progress when he sticks his neck out”

James Bryant Conant  
1893 -1978



# An Overview of Future Initiatives and Fiscal Issues at Bloomington

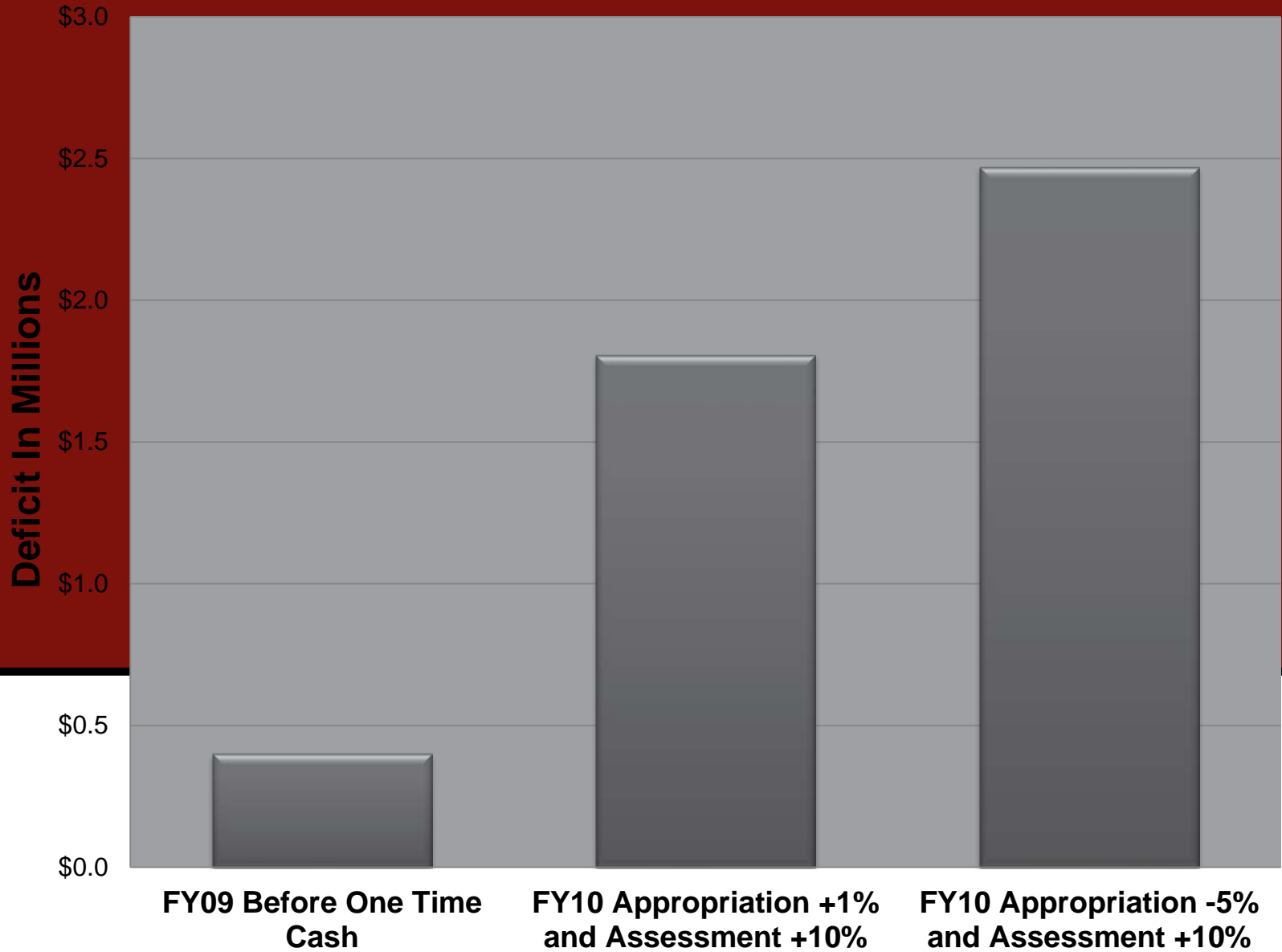


# 2009

- We expect to end this year in the black with a modest surplus
- The surplus is not base money, it is one time money associated with a larger than projected entering class
- We can't - and should not - try to build this into the base budget. There is too much demographic & economic turbulence to be certain how the next few years will turn out.



# Projected Deficit for FY10



# Update on Bloomington Initiatives

- Undergraduate Recruitment
  - Small signs of shifts in the right direction, undergraduate enrollment is up this semester
  - New direct admission program
  - Efforts to maintain contact and recruit students in U.D.
  - Praxis retention & diversity initiative
- Graduate Enrollment
- Distance Education Efforts
- New green power saving initiative led by ETS



# Summing Up

- Our reserves should still get us through approximately 2 to 3 years, depending upon how enrollments and state funding unfolds.
- Enough time to have launched some of our DE initiatives & continue our efforts to increase undergraduate enrollment.
- While we cannot predict, we believe that there will be significant pressures to begin to reduce the rapid upward pressures in student aid assessments in the next 2-3 years.



# Office of Research and Development

- Several proposals submitted to NSF, NIH, various other agencies and private foundations since Fall faculty meeting
- Upcoming Opportunities
  - Economic Stimulus
    - Great majority of funds going to Indiana (\$1.3 Billion) will be distributed by formula to school districts although some may reach higher education
    - Governor's plan has not yet been submitted

# Teacher Quality Partnership Grants

- \$100 million dollars in current fiscal year
  - One of two activities must be undertaken
    - Strengthened Pre-Bac program needs to include:
      - High Needs partnership (either urban or rural)
      - Strong mentoring program with classroom teacher(s)
      - Empirically-based program including strong understanding of student data
    - Teacher Residency Post-Bac program
      - ONE year induction program with master's at end of year
      - Strong partnership with High Needs School/District
  - Two optional activities
    - Prepare School Leaders for Rural Areas
    - Partner with a “digital education content developer” to improve pre-service program

# IES Summer and Fall Deadlines

- Institute for Educational Sciences (IES) at US Department of Education (<http://ies.ed.gov/funding/>)
  - Research and Training Grants Due Dates
    - Summer
      - Letters of Intent (April 27, 2009) – Not Binding
      - Proposals (June 25, 2009)
    - Fall
      - Letters of Intent (August 3, 2009) – Not Binding
      - Proposals (October 1, 2009)
  - IES Proposal Workshop “Brown Bag” April 27<sup>th</sup> Noon – 2pm Room 2140

# New Incentive

- Support of PI's who apply for higher indirect cost grants
- PI will receive into their research account 35% of indirect that the SOE receives ABOVE 40%.
- Example
  - A grant with \$100,000 of direct costs would generate \$54,000 of indirect costs if grant was at “full” indirect rate (54%)
  - President's office takes 2.5% “off the top” so SOE actually receives \$51,500 in indirect
  - 35% of the difference between \$51,500 and \$40,000 is \$4025 into PI's research account
  - Allocation is done annually after end of each fiscal year



# New additions to proposals



THE NEW YORKER



*"If they don't like our proposal I'll show them the kittens.  
Everybody likes kittens."*

