

Fall 2012 Update

School of Education

IUB and IUPUI



INDIANA UNIVERSITY

SCHOOL OF EDUCATION

Agenda

- Welcome and Introduction of New Faculty
- Dean's Report
- Introduction of BFC/UFC representatives
- State of the School Reports
 - Fiscal Report
 - Undergraduate Enrollment and Direct Admit
 - Graduate Enrollment and Fellowships
 - Research and Development
- Report from RHB agency on Branding of Bloomington campus

New Faculty Hires - Bloomington

- Sean Duncan – Learning Sciences
- Y. Barry Chung - Counseling
- Daisy Lovelace – Assoc. Director P-16 Center
- Lucy LePeau – Higher Education and Student Affairs
- Janet Decker – Education Law/Ed Leadership
- Kathryn Engebretson – Social Studies Education
- Anna Maria Brannan – Special Education
- Camilla McMahon – Special Education
- Frank Di Silvestro – Adult Education
- Jeani Young – Adult Education
- Marge Treff – Adult Education
- New Visiting Lecturers
 - Dustin Bailey – Special Education
 - Jill Clay – Special Education

Bloomington Approved Searches for 2012-2013

- Mathematics Education – open rank
- Qualitative Inquiry Methodologist – Asst. Professor
- Learning Sciences – Associate or Full Professor
- Instructional Systems Technology – Assistant Professor
- Literacy, Culture, and Language Education - Clinical
- Joint position with Informatics and Instructional Systems Technology
- Director for the Center for Social Studies and International Education (CSSIE)
- Director for the Center for Evaluation and Educational Policy (CEEP)

New Faculty Hires - IUPUI

- James Scheurich - Urban Ed Studies
- Lori Patton Davis - HESA
- Alexander Radosavljevic - Visiting Math Ed

New Faculty Hires - IUPUI

- James Scheurich - Urban Ed Studies
- Lori Patton Davis - HESA
- Alexander Radosavljevic - Visiting Math Ed

New Faculty Hires – IUPUC

- Regina Weir – Visiting Special Ed
- Kylea Asher – FFTF

IUPUI Approved Searches for 2012-2013

- Language Education/ESL
- Special Education
- Foundations

IUPUC Approved Searches

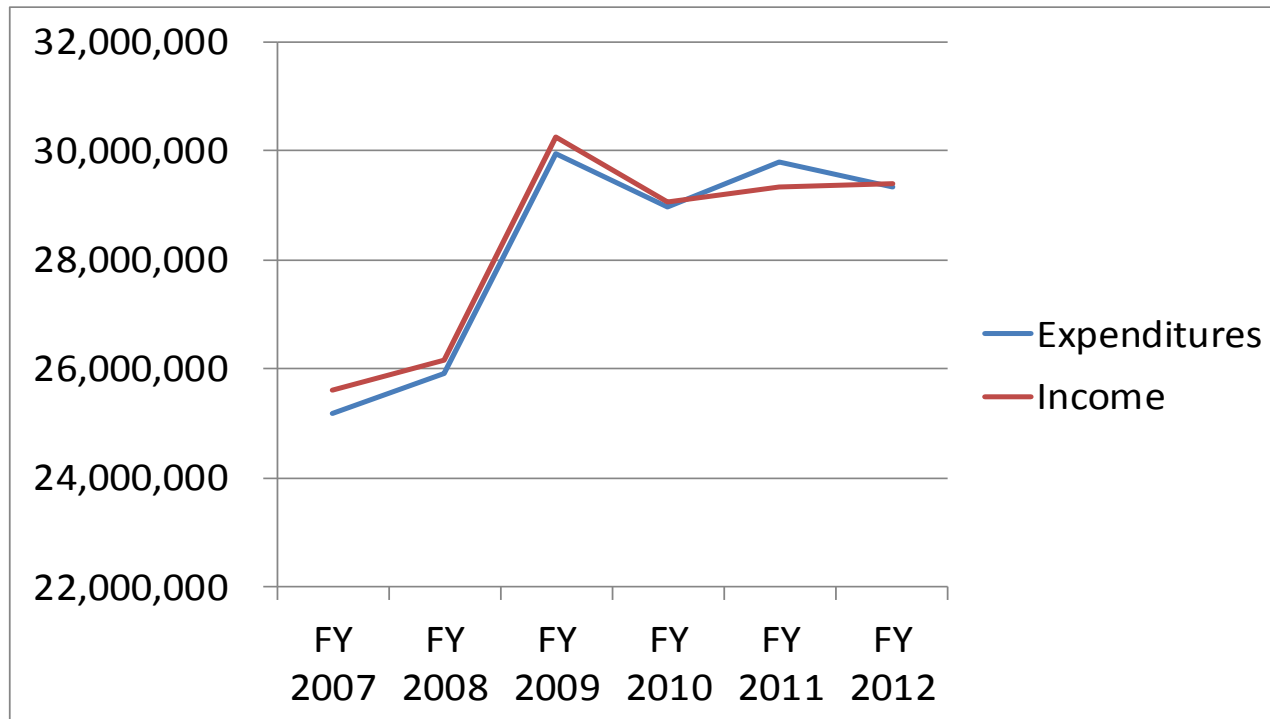
- Special Education

Dean's Report

Financial Report - Bloomington

- We ended the year with a \$49,989 surplus. This is 0.12% of our annual budget.
- Reserves continue to be healthy (~ 6 million).
- Have put aside money to renovate 11 classrooms beginning summer 2013

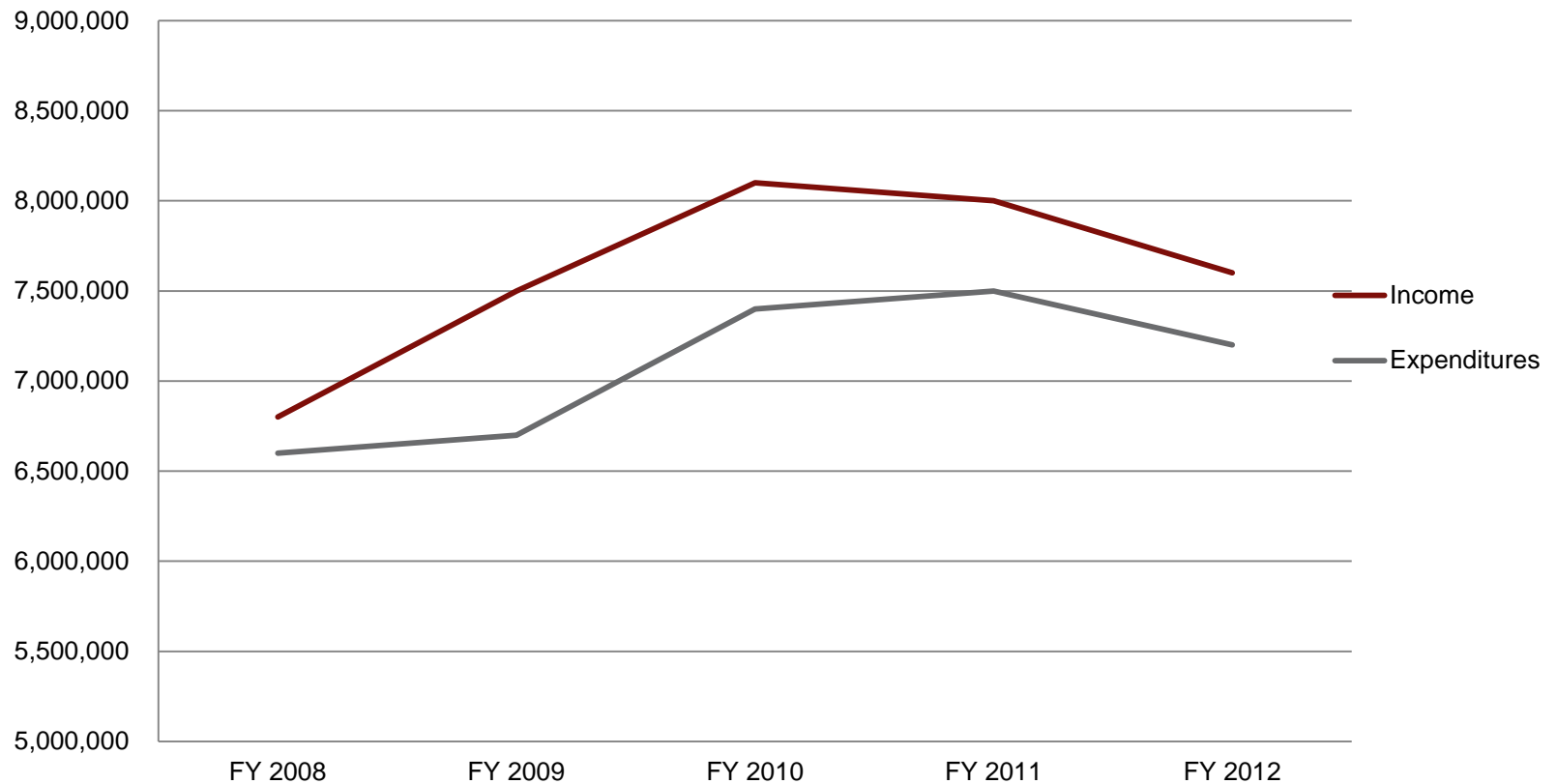
Bloomington Income vs Actual Expenditures



Financial Report - Indianapolis

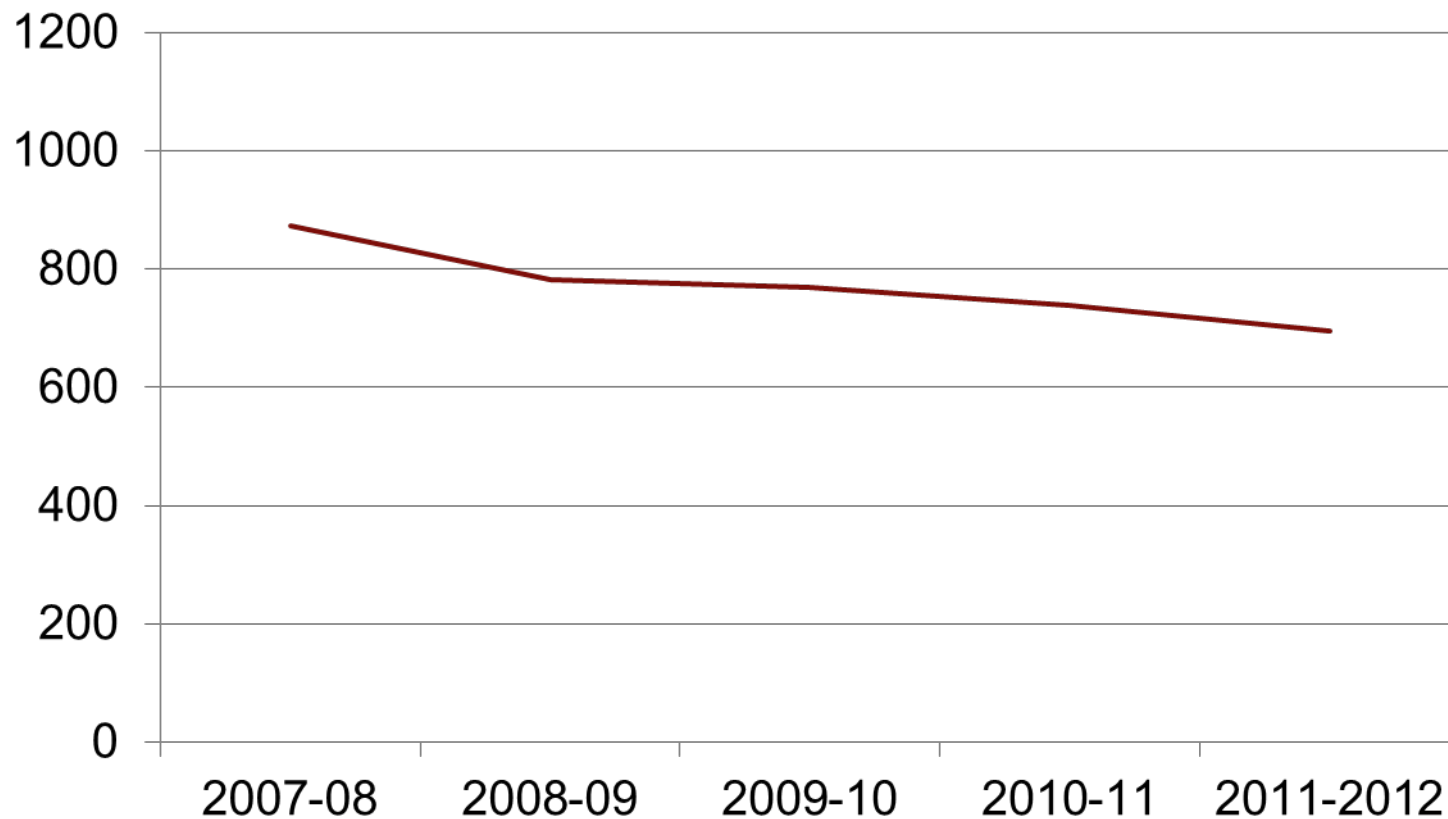
- Ended year with ~400,000 surplus (about 5% of budget).
- Strong reserves. Available fund balance is ~\$2.8 million.
- Closely watching credit hours; attending to growth areas.
- Plans to use portion of reserves for renovations and priority initiatives.

IUPUI Income vs. Expenditures

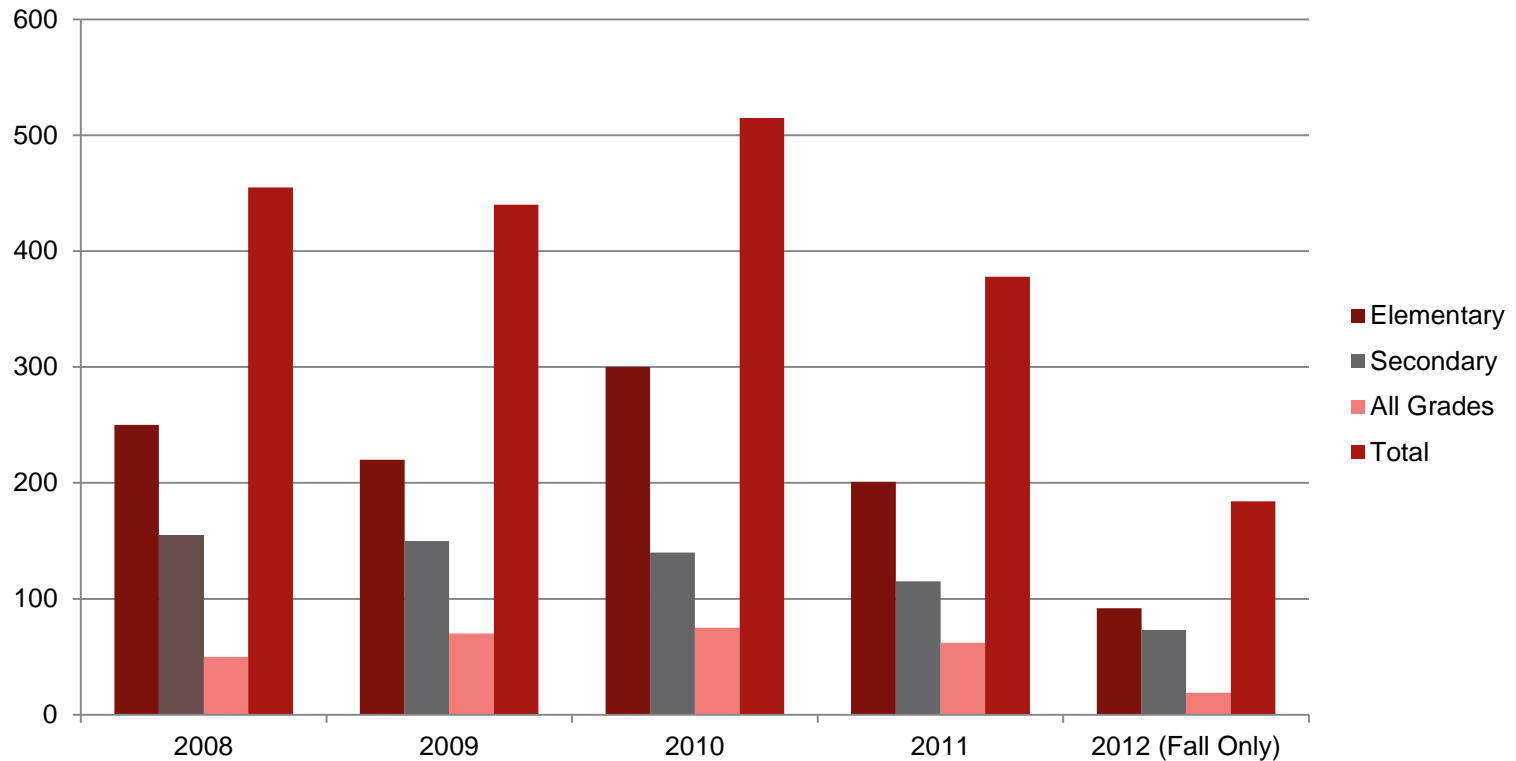


Bloomington Headcount Undergraduate Enrollment

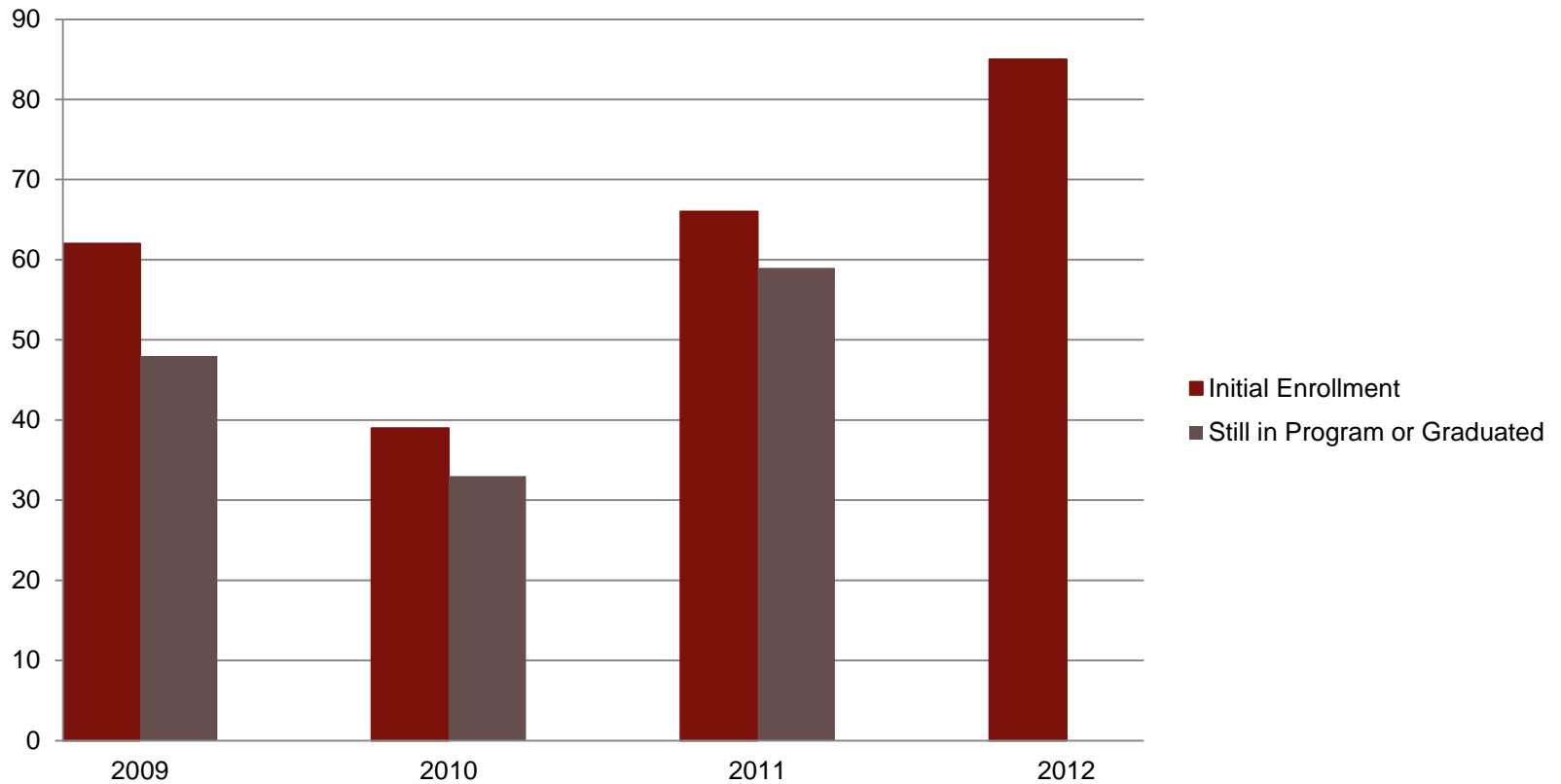
(does not include Undergraduate Division students)



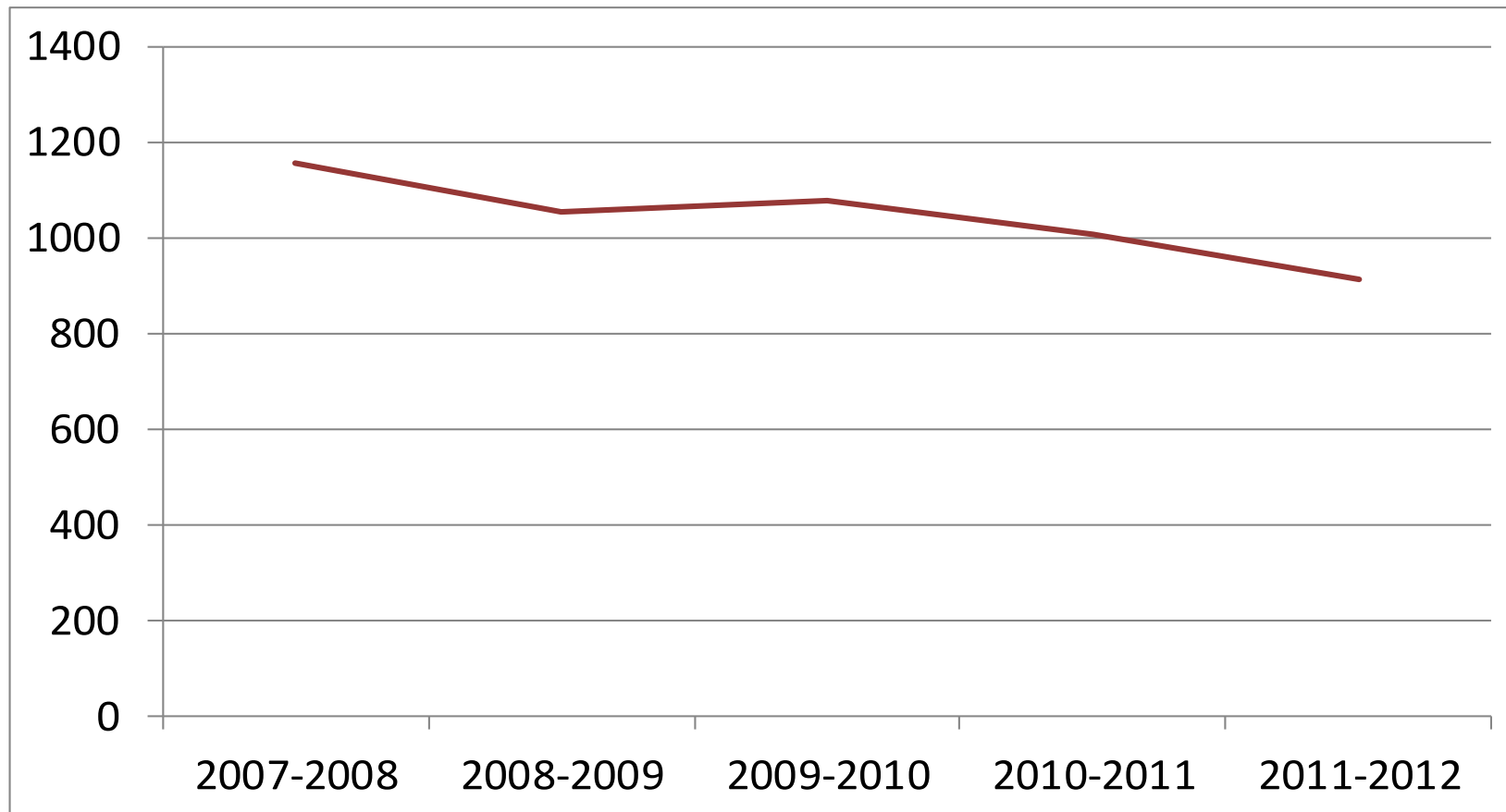
Bloomington Teacher Education New Admissions



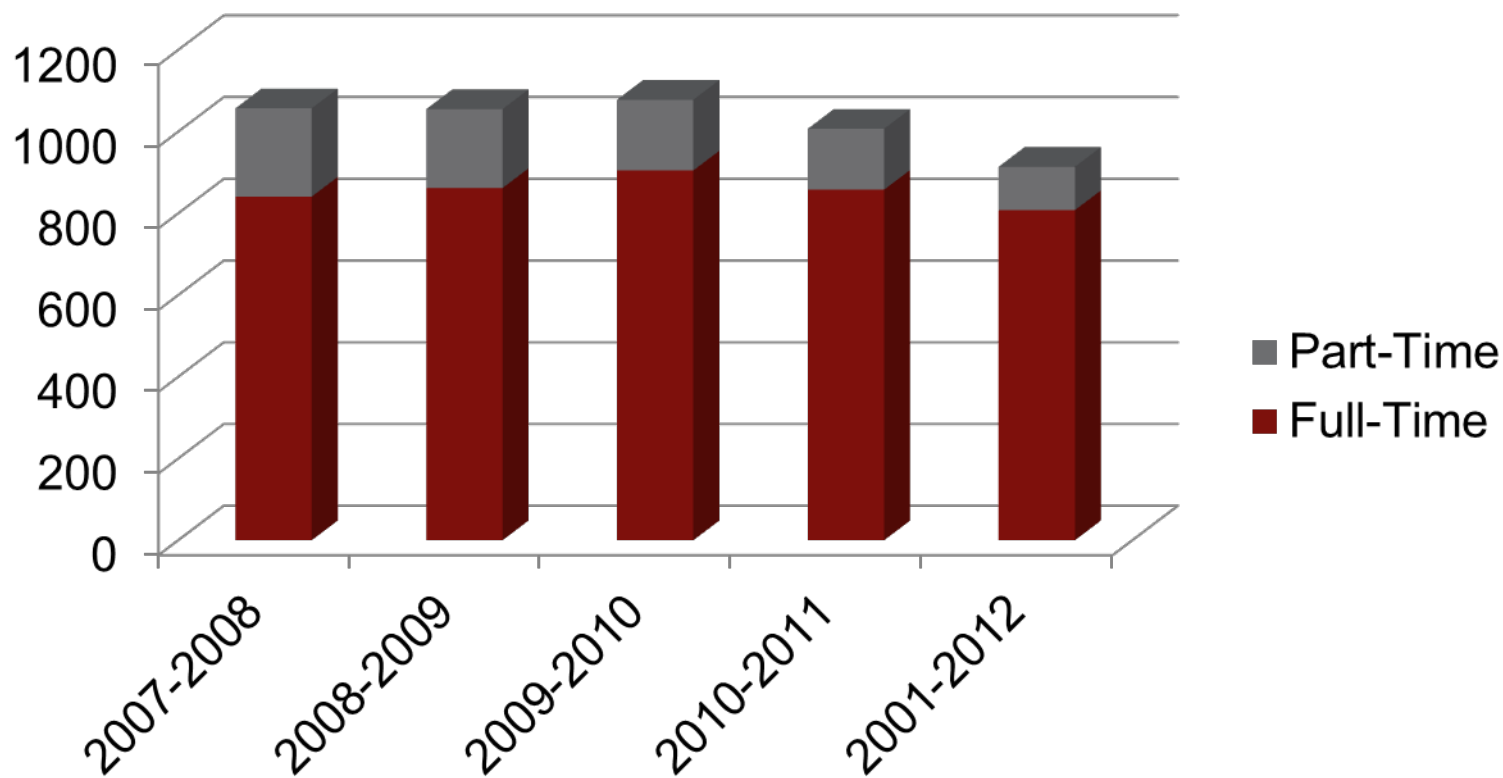
Bloomington Direct Admit Program



IUPUI Undergraduate Headcount Enrollment



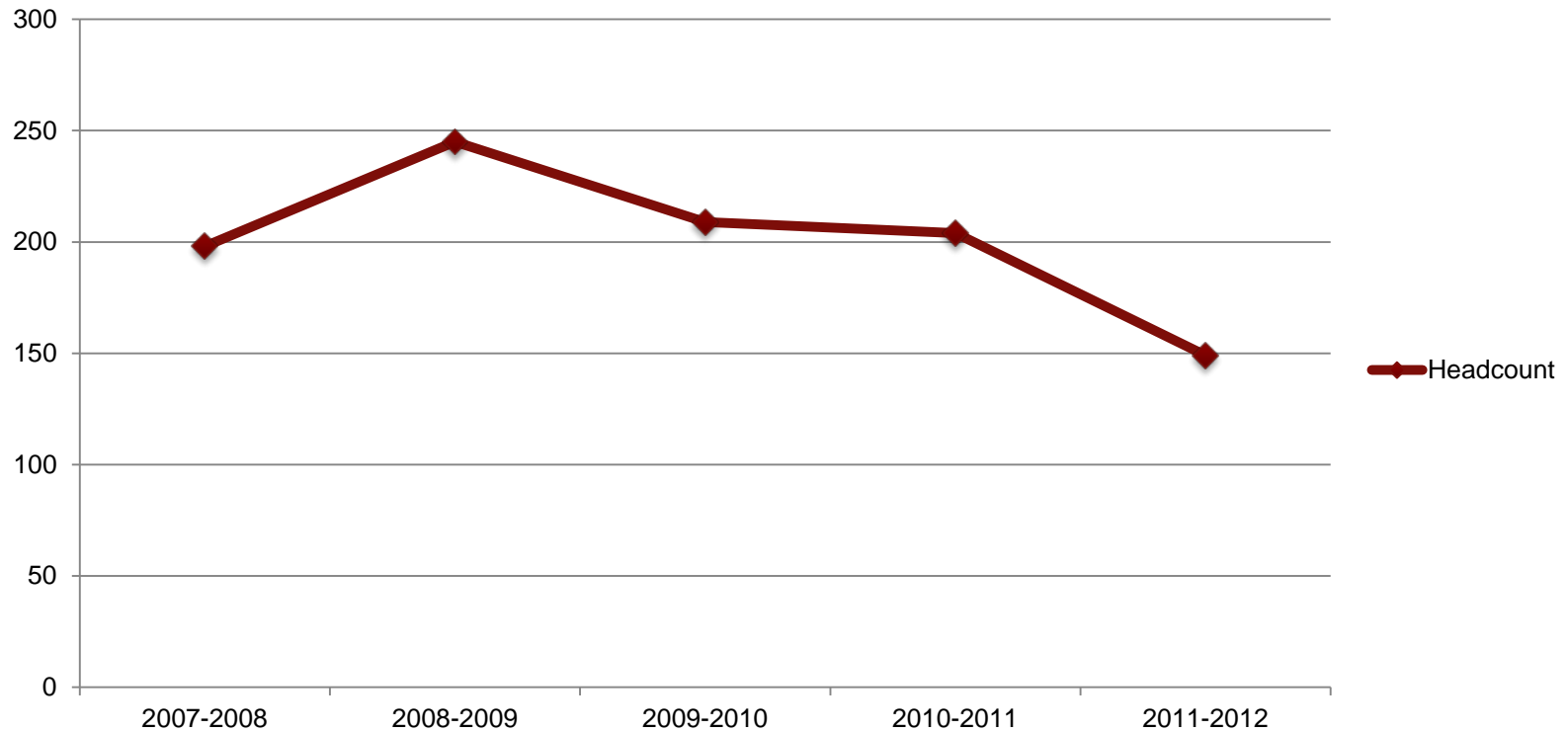
IUPUI Undergraduate Headcount Enrollment



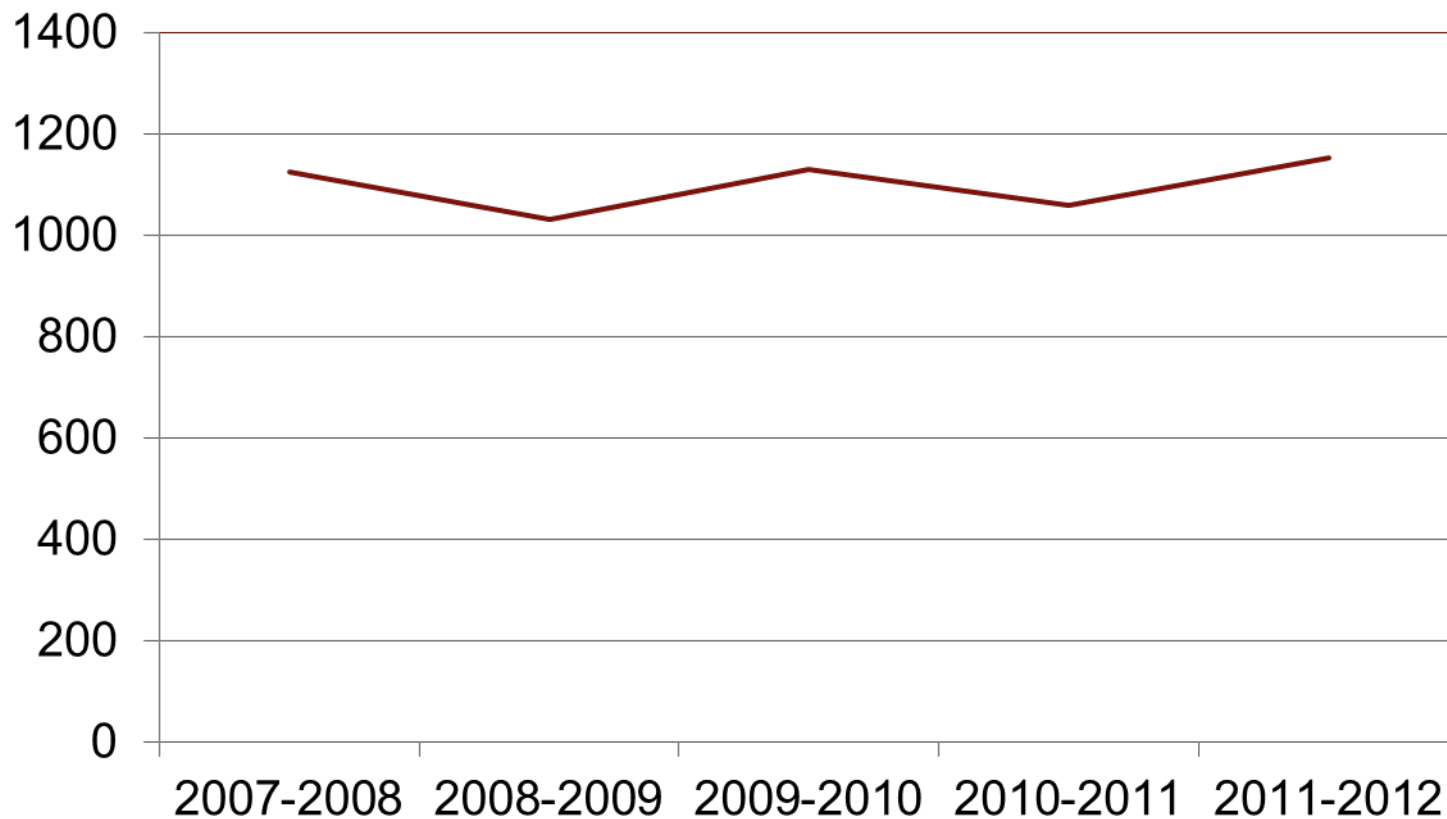
IUPUC Undergraduate Headcount Enrollment

(does not include Pre-education majors)

IUPUC DoE Headcount



Bloomington Headcount Graduate Enrollment



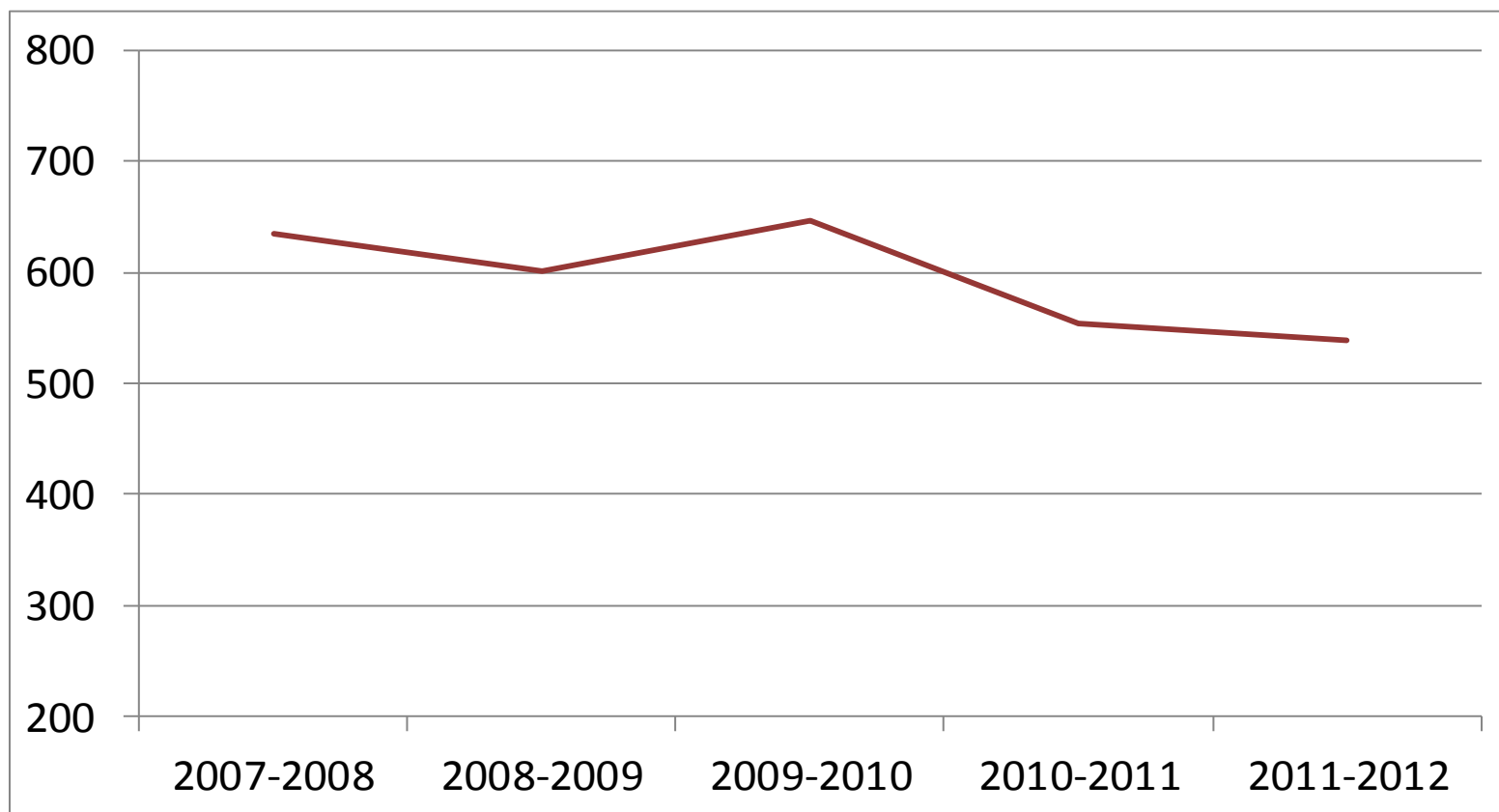
Bloomington Credit Hours 2009-2012

	Fall 2009	Spring 2010	Fall 2010	Spring 2011	Fall 2011
CEP	6,335	5,729	6,137	4,969	5,245
CI	7,870	7,551	7,744	7,961	7,500
ELPS	2,784	2,566	2,625	2,481	2,740
IST	2,922	2,777	2,629	2,052	2,213
LCLE	3,368	3,086	3,478	3,569	3,450
TOTAL	23,279	21,709	22,613	21,032	21,148

Bloomington Graduate Fellowships

Fellowship	Declined	Accepted
Deans	1	1
School of Education	1	3
Faculty	4	9
Proffitt/other	1	6
Total	7	19

IUPUI Graduate Headcount Enrollment



Graduate Fellowships IUPUI

- Urban Education Ph.D.
 - 2 awards beginning 2012-2013
 - Fellowship for \$18,000
 - Graduate Assistantship for 20 hours for \$15,500
 - 21 hours of fee remission
- 4 other levels of fellowships provided by Block Grant funding of \$25,000 and an additional \$25,000 match from the school.

Research and Development - Bloomington

	FY 2009	FY 2010	FY 2011	FY 2012
Proposal Numbers	180	206	157	137
Proposal Dollars	\$19,016,951	\$49,256,196	\$28,475,323	\$18,467,778
Award Dollars	\$16,075,158	\$12,619,616	\$19,428,581	\$7,339,778
Expenditure Dollars	\$13,395,957	\$12,008,542	\$10,703,387	\$10,675,791
Indirect Dollars	\$1,423,100	\$1,619,309	\$1,377,256	\$1,522,236
Indirect %	8.9%	12.8%	7.1%	14.3%

Bloomington R & D News

- Proffitt Academic Year, Proffitt Summer, and Kempf Internal grants – Due Monday, December 14, 2012
- NSF (www.nsf.gov)
 - Discovery Research K-12 (DRK-12), December 6, 2012
 - Cyberlearning: Transforming Education, Exploration Projects, January 16, 2013. Other deadlines later in 2013 (see solicitation).
 - Advancing Informal STEM Learning (AISL) - formerly Informal Science Education, January 14, 2013
 - Innovative Technology Experiences for Students and Teachers (ITEST), November 13, 2012
- IES (www.ies.ed.gov)
 - 2013 dates not announced yet but expect July and September due dates with Letters of Intent in April and June.

Research & Development IUPUI

	FY 2010	FY 2011	FY 2012
Submitted	23	20	16
Awards	14	15	11
Proposal Dollars	2,607,551	3,499,318	2,163,034
Award Dollars	1,786,047	1,874,779	2,014,732
Expenditures	1,663,938	1,852,274	2,421,202
Indirect Dollars	109,711	117,404	232,922
Indirect %	6.1%	6.3%	9.6%

IUPUI News

- Strategic Planning - SOE & Campus
- Campus Accreditation Visit
- Exceeded Capital Campaign Goal (\$2 mill)
- MOU with Moi University, Kenya
- Suzanne Whitton, Art Education alum, named Indiana's 2012 Teacher of the Year.
- Jose Rosario Scholarship Fundraiser Oct. 23rd
- Tavis Smiley "Celebrate Transformational Educators" Event Oct. 26th

IUPUC News

- Awarded 1 of 3 regional partnership grants from Indiana's Core to College initiative – to increase college readiness and graduation rates through improved alignment between K-12 and higher education
- Received \$450,000 from EcO15 recent LEI grant to support PBL in region

QUESTIONS OR COMMENTS?