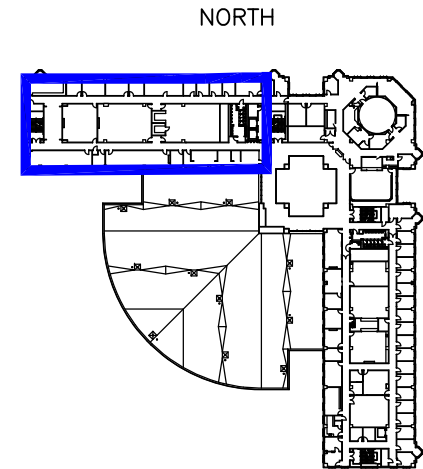
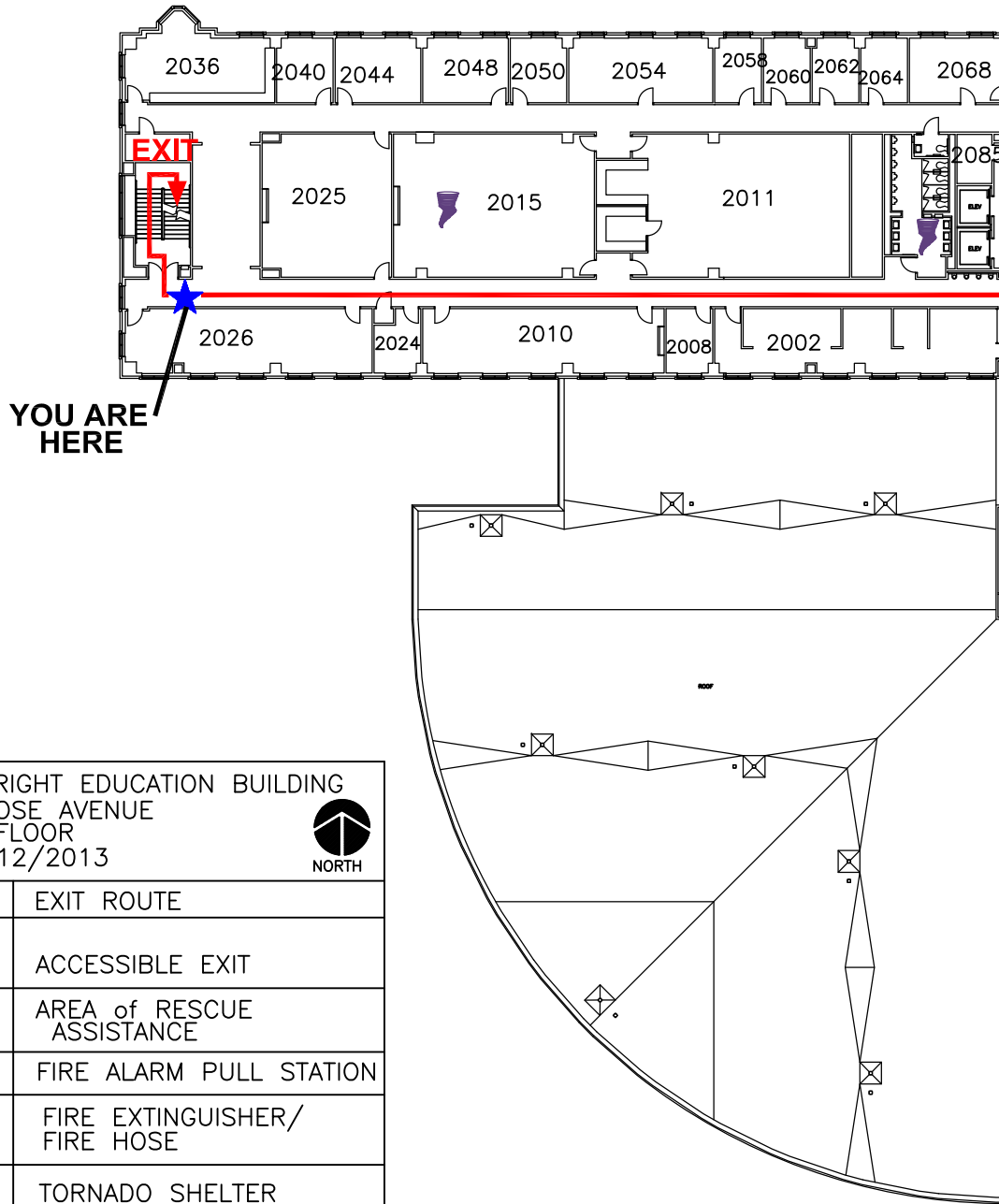







EMERGENCY EVACUATION

AED located at 1st floor 1161 Circulation Desk



BL245 WRIGHT EDUCATION BUILDING 201 N ROSE AVENUE SECOND FLOOR DATE: 8/12/2013		 NORTH
	EXIT ROUTE	
	ACCESSIBLE EXIT	
E	AREA of RESCUE ASSISTANCE	
F	FIRE ALARM PULL STATION	
	FIRE EXTINGUISHER/ FIRE HOSE	
	TORNADO SHELTER	

IN CASE OF FIRE:
 Sound the alarm, close doors, use nearest available exit and proceed away from building to an assembly area.

EVACUATION POINTS FIRST SEARCHED BY EMERGENCY PERSONNEL:
 Occupants may use any exit stairwell landing. Move to an area near an exit, out of the flow of traffic. Send someone to inform the Fire Department or I.U.P.D. of your location and wait for assistance.

FOR TORNADO WARNINGS OR THREATENING WEATHER:
 Go to designated tornado shelter on the lowest level. If you don't have time, go to the designated tornado shelter on your level.

BL245-3B.DWG