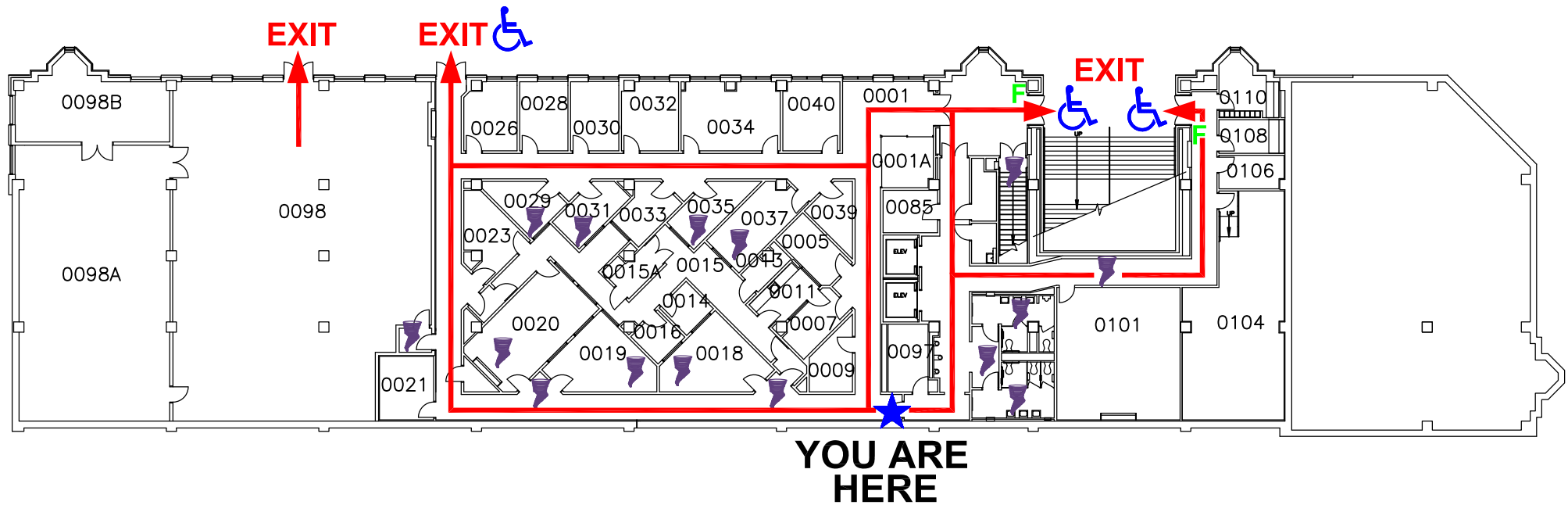





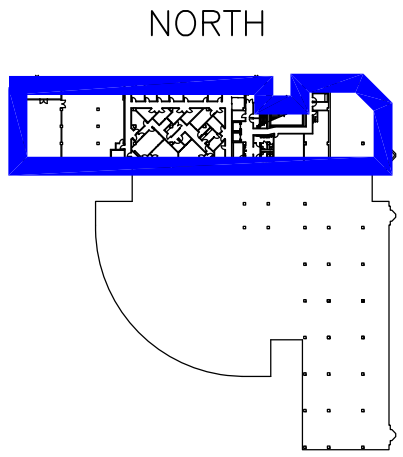


EMERGENCY EVACUATION

AED located at 1st floor 1161 Circulation Desk



BL245 WRIGHT EDUCATION BUILDING 201 N ROSE AVENUE GROUND FLOOR DATE: 10/11/2006	
 NORTH	
	EXIT ROUTE
	ACCESSIBLE EXIT
E	AREA of RESCUE ASSISTANCE
F	FIRE ALARM PULL STATION
	FIRE EXTINGUISHER/ FIRE HOSE
	TORNADO SHELTER



IN CASE OF FIRE:
Sound the alarm, close doors, use nearest available exit and proceed away from building to an assembly area.

EVACUATION POINTS FIRST SEARCHED BY EMERGENCY PERSONNEL:
Occupants may use any exit stairwell landing. Move to an area near an exit, out of the flow of traffic. Send someone to inform the Fire Department or I.U.P.D. of your location and wait for assistance.

FOR TORNADO WARNINGS OR THREATENING WEATHER:
Go to nearest area without windows, such as restroom, closet or center stairwell and close the door.

BL245-1A.DWG