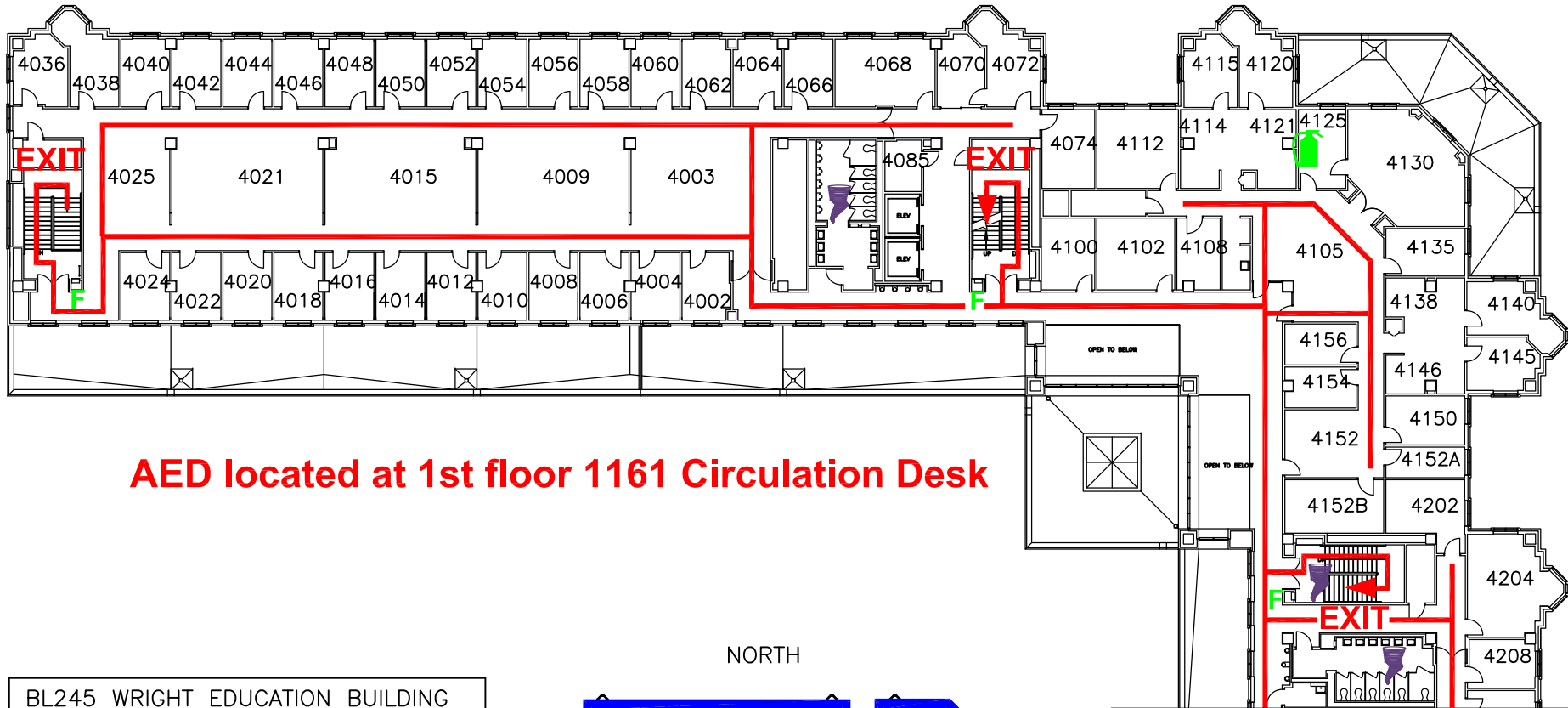
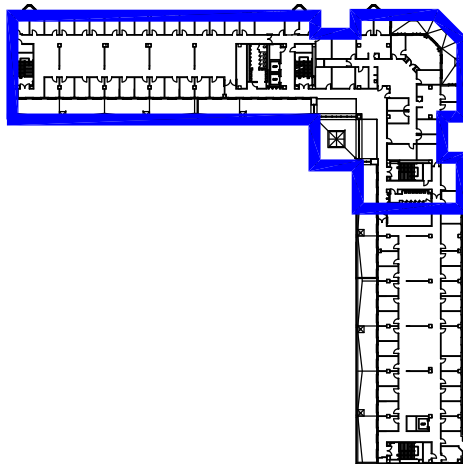


# EMERGENCY EVACUATION







**AED located at 1st floor 1161 Circulation Desk**

NORTH



BL245 WRIGHT EDUCATION BUILDING  
201 N ROSE AVENUE  
FOURTH FLOOR  
DATE: 10/11/2006



	EXIT ROUTE
	ACCESSIBLE EXIT
<b>E</b>	AREA of RESCUE ASSISTANCE
<b>F</b>	FIRE ALARM PULL STATION
	FIRE EXTINGUISHER/ FIRE HOSE
	TORNADO SHELTER

## IN CASE OF FIRE:

Sound the alarm, close doors, use nearest available exit and proceed away from building to an assembly area.

## EVACUATION POINTS FIRST SEARCHED BY EMERGENCY PERSONNEL:

Occupants may use any exit stairwell landing. Move to an area near an exit, out of the flow of traffic. Send someone to inform the Fire Department or I.U.P.D. of your location and wait for assistance.

## FOR TORNADO WARNINGS OR THREATENING WEATHER:

Go to designated tornado shelter on the lowest level. If you don't have time, go to the designated tornado shelter on your level.

BL245-5A.DWG